

# **Connecticut Conservation and Development Policies Plan 2025-2030 Revised Preliminary Draft**

---

January 23, 2024

# Today's Meeting

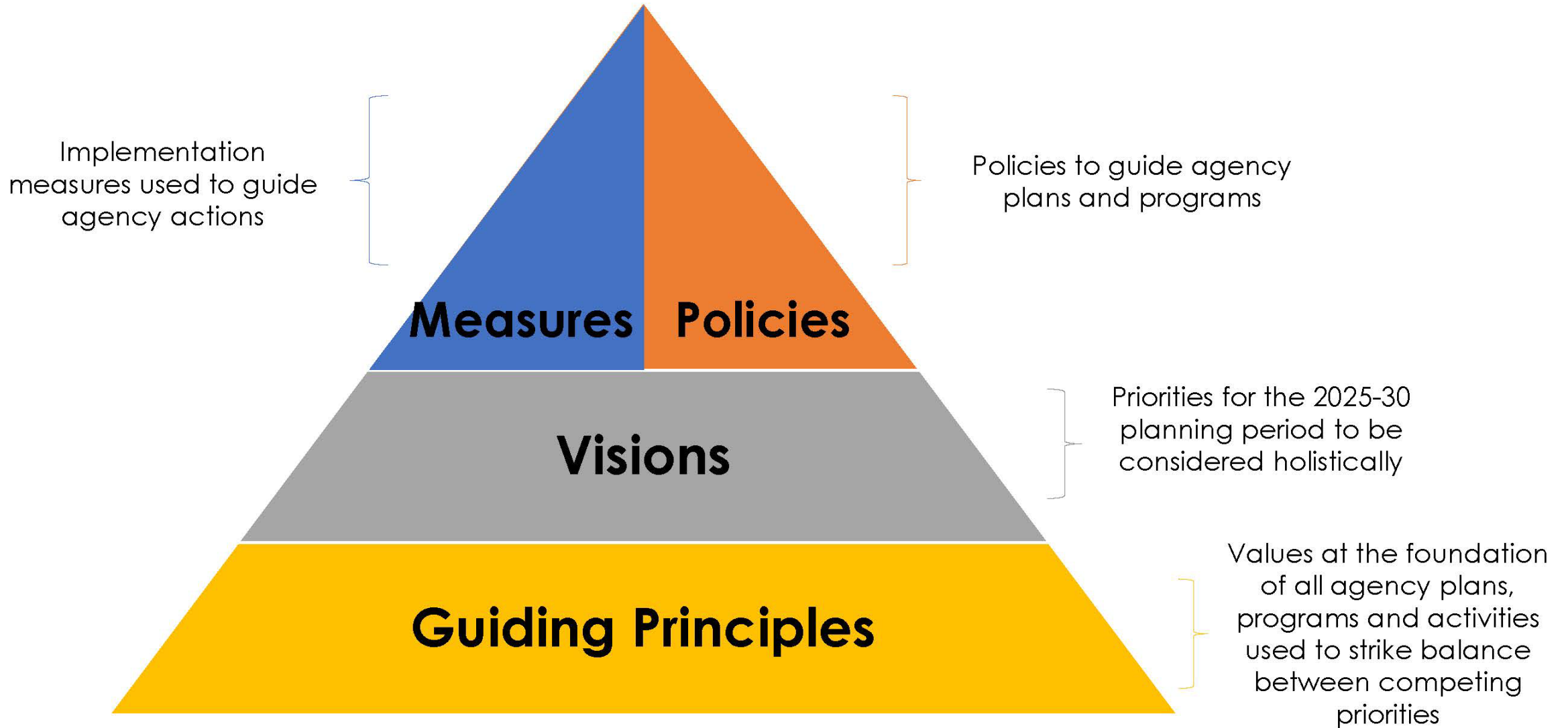
---

- Provide an overview of revised preliminary draft C&D Plan
- Discuss mapping parameters
- Receive Continuing Committee feedback
- Leading up to publication of draft for public comment by March 1<sup>st</sup>

# What's Changed Since November?

- Continuing Committee and agency feedback has helped to significantly flesh out the entire draft Plan
- Clarified the structure and applicability of the Plan
- Added “targets” to further explain Visions
- Working with agencies to create a more complete appendix of Ongoing Initiatives and Resources under each Vision to serve as a clearinghouse that can be regularly updated
- Added one policy, slightly revised Implementation Measures
- Began working on mapping

# Structure of the 2025-30 C & D Plan



# Revised Guiding Principles

---



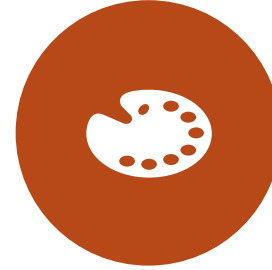
## SUSTAINABLE

Balance the ecological, social, and economic dimensions of conservation and development to meet current needs without compromising the future. This entails protecting, preserving, and conserving our natural resources, efficiently and responsibly using our economic and human resources, and achieving and maintaining social wellbeing.



## EQUITABLE

Ensure a high quality of life and opportunity for people of any income, race, ethnicity, religion, gender, ability, or age. This requires reducing disparities in outcomes, access, and opportunities, minimizing environmental, public health, and other burdens, and extending community benefits.



## VIBRANT

Create and maintain culturally, economically, and physically diverse communities and an innovative, thriving statewide economy. This involves cultivating diverse businesses in type, size, and ownership, and creating, preserving, and promoting distinct communities and regions and their unique mixes of historic, natural, cultural, and social features.



## RESILIENT

Develop and maintain the capacity to prepare for, recover from, adapt to, and thrive in changing and disruptive conditions. This demands that Connecticut understand, avoid, and/or reduce a variety of environmental, economic, public health, and social well-being risks, build technical, staffing, fiscal, and other capacity to implement resilience measures and capitalize on opportunities to provide multiple resilience benefits.

# Visions

---

Five equally prioritized Visions unchanged; but added:

- A defining *vision statement* that summarizes the goal of each Vision area
- *Targets* within each Vision area for agencies to direct their plans, programs, and investments towards
- Brief discussions of current *strengths* and *challenges* within each Vision area that inform the targets.

# A THRIVING ECONOMY

*Connecticut will have a flourishing and diverse economy that leverages our strategic location, existing infrastructure, and natural and cultural assets.*



## Targets

To accomplish this Vision, state agencies will direct plans, programs, and investments towards:

- Promoting infill development and redevelopment in areas with existing supportive infrastructure
- Promoting compact, pedestrian-oriented, mixed use development patterns around existing and planned public transportation
- Improving transit services to provide convenient, reliable, safe, and competitive transportation choices
- Reducing economic disparities among residents, neighborhoods, and communities
- Ensuring high quality opportunities for all residents to participate in the economy
- Creating and maintaining a diverse mix of economic activities within and across economic sectors
- Maintaining a resilient and adaptable workforce
- Promoting regional collaboration and coordination in growing, retaining, and attracting businesses and talent
- Recognizing the economic impacts of CT's tribes, and protecting and celebrating tribal culture
- Improving statewide energy resilience
- Pursuing greenhouse gas emission reduction strategies

## Current Strengths

- Significant recent and ongoing federal investments in infrastructure, including \$5.4 billion in roads, bridges, public transit, ports, and airports; approximately \$200 million in clean water and water infrastructure; and \$230 million in broadband<sup>i</sup>
- Strategic location in the Northeast Megaregion provides ready access to major markets and financial centers
- 5th highest state gross domestic product per capita in 2022<sup>ii</sup>
- Robust education systems and 7th most highly educated adult populations in the nation (2022 ACS 1-Year data<sup>iii</sup>)
- Estimated \$954 million in expenditures by Arts and Culture Organization and their Audiences in FY 2022.<sup>iv</sup>
- Agricultural cash receipts of approximately \$590 million in 2021, with miscellaneous crops, floriculture, and dairy products the leading commodities.<sup>v</sup>
- Abundance of natural resources and historic, cultural, and creative assets provide a high quality of life

## Current Challenges

- High cost of living and lack of affordable housing<sup>vi, vii</sup>
- An older population than many other states, with sluggish total population growth since 2010<sup>viii, ix</sup>
- 2<sup>nd</sup> in the nation for income inequality among states<sup>x</sup>
- Climate risks to businesses, housing, and infrastructure<sup>xi</sup>
- Condition and capacity of infrastructure to support growth<sup>xii</sup>

# Ongoing Initiatives and Resources Appendix

---

## *Thriving Economy*

---

### Department of Economic and Community Development (DECD)

[Economic Action Plan](#) – outlines strategies for “driving inclusive growth” in CT

[Office of Brownfield Remediation and Development](#) – provides technical and financial assistance for brownfield redevelopment including mixed-use, residential, commercial, industrial, retail, and open space uses

[Connecticut Office of the Arts Strategic Plan 2022-27](#) – informs the Connecticut Office of the Arts as they work to “enhance, support, and empower the Arts for every resident”

[Connecticut Office of Tourism FY23 Strategic Plan](#) – presents strategies to position Connecticut as a tourism destination and increase awareness of tourism assets

[Connecticut’s Manufacturing Strategic Plan](#) – aims to develop Connecticut into an internationally recognized leader in manufacturing

### Governor’s Workforce Council

[Workforce Strategic Plan 2020](#) – makes recommendations to improve the state’s workforce and employment system

### Department of Labor (DOL)

[Office of Apprenticeship Training](#) – Only federally authorized entity in Connecticut for Registered Apprenticeship Programs to increase workforce recruitment and proficiency, help employers transfer occupational skills to a new generation of workers, and promote succession planning

### Department of Agriculture (DoAg)

[CT Grown Program](#) – identifies and promotes Connecticut agriculture and aquaculture products

[Farm Transition Grants](#) – grant program to support the diversification of existing farm operations, transitioning to value-added agricultural production and sales, and other venues in which a majority of products sold are grown in the state

[Farmland Restoration, Climate Resiliency and Preparedness](#) – grant program to increase long-term climate resiliency of farming operations and decrease farm vulnerability to extreme weather events



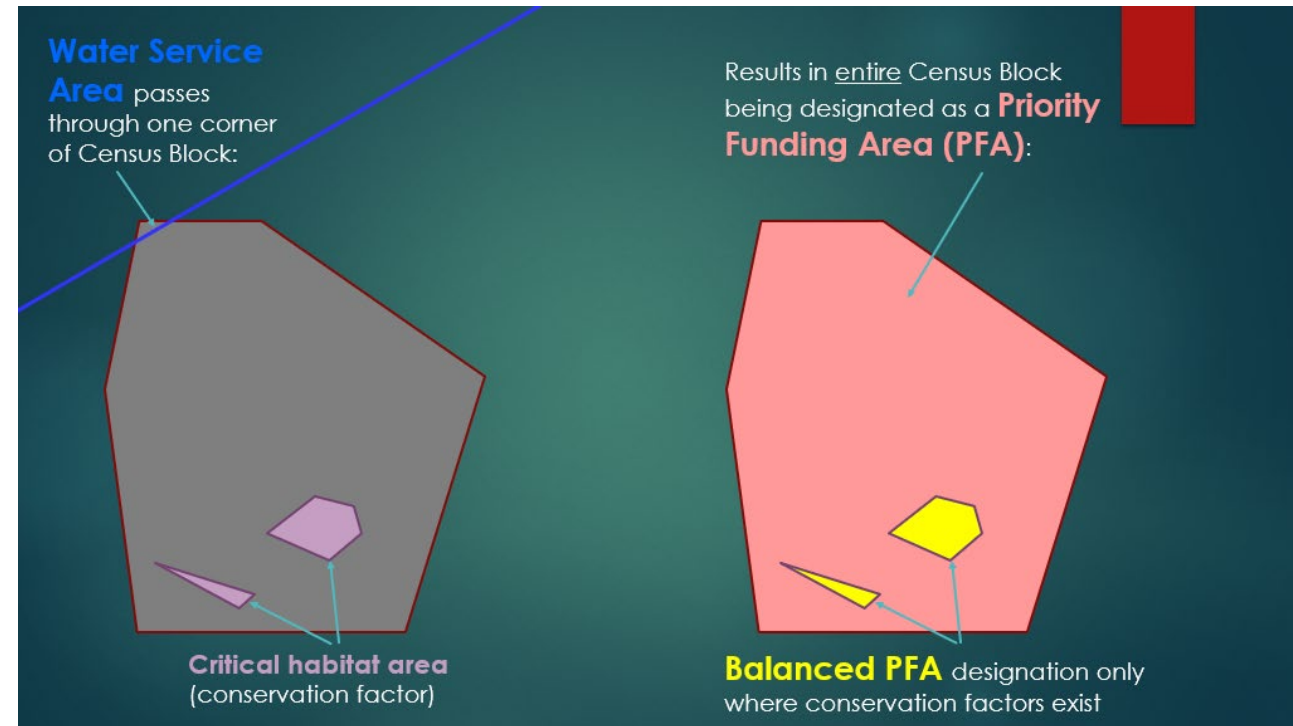
# New Policy

---

1. Seek multiple benefits and create efficiencies across agencies to optimize the use of state resources in conservation and development initiatives.
2. Leverage federal and private resources to support programs and projects that balance priorities.
3. Encourage planning and preliminary phasing among partners in conservation and development to advance well-balanced projects for potential state investment.
4. Develop greater capacity to govern, develop, leverage, and use existing data.
5. Promote regional solutions to conservation and development and in the efficient use of limited resources.
6. Clearly communicate priorities horizontally and vertically within and across agencies.
7. **Seek out and facilitate meaningful engagement with diverse stakeholders.**

# Existing Locational Guide Map (LGM)

- Has relied on Census Block as basic unit of geography for LGM and Priority Funding Area Map
- Census Blocks vary significantly in size between densely and sparsely populated areas
- Spatial mismatch between factors and Census Block designation
- Mapping at a statewide scale should not be used to make site-specific decisions
- Trying a new approach to the LGM with assistance from GIS Office



# New LGM

---

- Developing methodology to identify “Activity Centers” of varying intensities around the state, inspired by work from Brookings Institution and the Indianapolis Metropolitan Planning Organization
- Activity Centers: where employment, civic uses, transportation assets, cultural attractions, and medical and educational institutions cluster at a local scale
  - Provide tool for agencies to compare current conditions relative to specific Visions or agency objectives, and better explore the presence of model components
  - Highlight areas for placemaking investments at various scales and areas for conservation, resource protection and connectivity
  - Planning tool to be used in conjunction with C&D Plan text
- Still in data and model exploration stage

# LGM Methodology

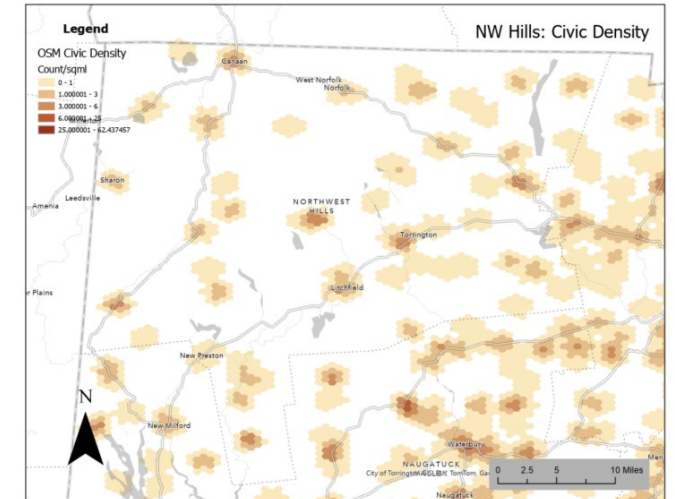
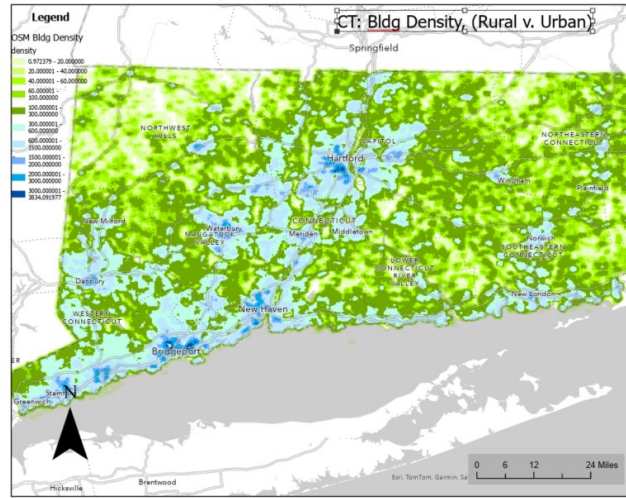
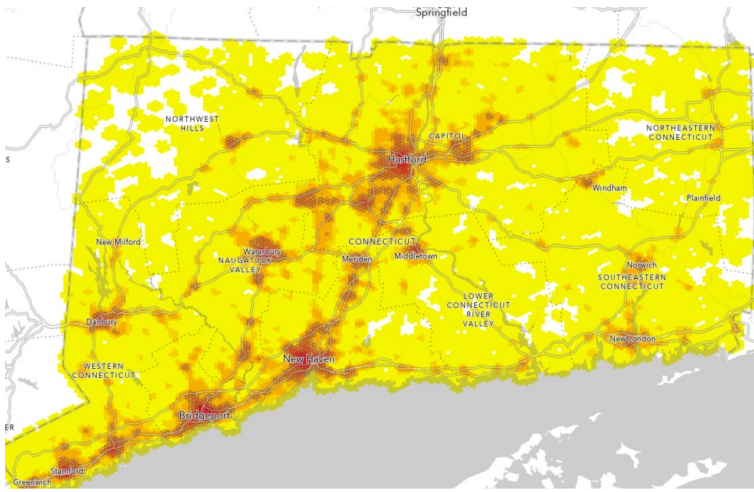
- Publicly available data sets
- Activity model components
  - Civic centers
  - Recreation centers
  - Cultural centers
  - Commercial centers
  - Transit and traffic centers
- Combination or additive model
  - E.g. Suitability analysis

| Data                     | Background  |
|--------------------------|---|
| Open Street Maps         | Crowd-sourced data set (identifies features in the environment)<br><a href="https://download.geofabrik.de/north-america/us.html">https://download.geofabrik.de/north-america/us.html</a><br>(OSM with shape files)  |
| Overture Foundation Maps | (OSM-based semi-open sourced)<br>Needs DB based access but may be more complete, use for second round.<br><a href="https://community.esri.com/t5/geoanalytics-engine-blog/using-overture-maps-data-in-geoanalytics-engine/ba-p/1341493">https://community.esri.com/t5/geoanalytics-engine-blog/using-overture-maps-data-in-geoanalytics-engine/ba-p/1341493</a> |
| Living Atlas (ESRI)      | Combines public sources with some proprietary data sets, mostly webservice  |
| CT Geodata Portal        | CT spatial data aggregation site  |
| CT ECO                   | Imagery products  |
| Safegraph                | Commercial Points of Interest – useful if want to identify commercial centers.  |
|                          |   |

# Activity Center Potential Data

| Data Sets                               | Locations  | Notes and Limitations   |
|---|--|---|
| Town Hall                               | <a href="https://hub.arcgis.com/datasets/fedmaps::city-town-halls/explore?location=-0.000000%2C0.000000%2C2.88">https://hub.arcgis.com/datasets/fedmaps::city-town-halls/explore?location=-0.000000%2C0.000000%2C2.88</a>  | Downloaded OSM  |
| Libraries                               | <a href="https://www.google.com/maps/d/viewer?mid=1oWybcLqMD7wmB5gDcASg-uCHx4&amp;hl=en_US&amp;ll=41.51652271310471%2C-72.73447000000002&amp;z=9">https://www.google.com/maps/d/viewer?mid=1oWybcLqMD7wmB5gDcASg-uCHx4&amp;hl=en_US&amp;ll=41.51652271310471%2C-72.73447000000002&amp;z=9</a><br>Web map library regions<br><a href="https://ctlibraryassociation.org/CT_Library_Association_Regions">https://ctlibraryassociation.org/CT_Library_Association_Regions</a>  | Need to process   |
| Post Office                             | <a href="https://postalpro.usps.com/gis/json_psv_files">https://postalpro.usps.com/gis/json_psv_files</a><br><a href="https://postalpro.usps.com/gis/po-location-icd">https://postalpro.usps.com/gis/po-location-icd</a><br><a href="https://portal.ct.gov/SOTS/Register-Manual/Section-VII/Post-Offices-in-Connecticut">https://portal.ct.gov/SOTS/Register-Manual/Section-VII/Post-Offices-in-Connecticut</a>  | OSM also available<br>Need to process some of these                     |
| Place of Worship                        | <a href="https://www.expertgps.com/data/ct/churches.asp">https://www.expertgps.com/data/ct/churches.asp</a><br><a href="https://download.geofabrik.de/north-america/us.html">https://download.geofabrik.de/north-america/us.html</a><br><a href="https://hifld-geoplatform.opendata.arcgis.com/datasets/geoplatform::all-places-of-worship/explore">https://hifld-geoplatform.opendata.arcgis.com/datasets/geoplatform::all-places-of-worship/explore</a>  | OSM<br>Need to process  |
| Transportation Stops                    | <a href="https://openhartford-hartfordgis.opendata.arcgis.com/datasets/ct-transit-bus-stops/explore?location=41.629837%2C-72.436144%2C10.06">https://openhartford-hartfordgis.opendata.arcgis.com/datasets/ct-transit-bus-stops/explore?location=41.629837%2C-72.436144%2C10.06</a>  | Contacted Greg Ciparelli<br>May need to get from COGs and bus operators |
| State and Federal Government Facilities | <a href="https://carto.nationalmap.gov/arcgis/rest/services/structures/MapServer/36">https://carto.nationalmap.gov/arcgis/rest/services/structures/MapServer/36</a><br><a href="https://www.arcgis.com/apps/mapviewer/index.html?url=https://services2.arcgis.com/FiaPA4ga0iQKduv3/ArcGIS/rest/services/Structures_Landmarks_v1/FeatureServer&amp;source=sd">https://www.arcgis.com/apps/mapviewer/index.html?url=https://services2.arcgis.com/FiaPA4ga0iQKduv3/ArcGIS/rest/services/Structures_Landmarks_v1/FeatureServer&amp;source=sd</a> |   |
| Colleges and Universities               | <a href="https://mycollegeselection.com/maps/colleges-in-connecticut-map/">https://mycollegeselection.com/maps/colleges-in-connecticut-map/</a><br><a href="https://www.google.com/maps/d/viewer?mid=11yx6Vhkjn1Vgpj7OIUCEhJ2NFic&amp;hl=en&amp;ll=41.48548255739967%2C-72.76881449999998&amp;z=10">https://www.google.com/maps/d/viewer?mid=11yx6Vhkjn1Vgpj7OIUCEhJ2NFic&amp;hl=en&amp;ll=41.48548255739967%2C-72.76881449999998&amp;z=10</a>   | Need to process   |
| Hospitals                               | <a href="https://www.arcgis.com/apps/mapviewer/index.html?webmap=f267723b90944727966f66768a8012f4">https://www.arcgis.com/apps/mapviewer/index.html?webmap=f267723b90944727966f66768a8012f4</a>  | Need to process   |
| Bldgs, parcels, & CAMA                  | "N:\GIS\State_Parcels_2023"  | 2023 parcel and cama data set. Size of Buildings                        |
| Housing prices                          | N:\GIS\State_Parcels_2023  | 2023 CAMA   |
| Traffic density (AADT)                  | <a href="https://connecticut-ctdot.opendata.arcgis.com/datasets/CTDOT::annual-average-daily-traffic/explore?location=41.629819%2C-72.753420%2C11.17">https://connecticut-ctdot.opendata.arcgis.com/datasets/CTDOT::annual-average-daily-traffic/explore?location=41.629819%2C-72.753420%2C11.17</a>  | downloaded  |
| Crash densities                         | <a href="https://connecticut-ctdot.opendata.arcgis.com/search?q=crashes">https://connecticut-ctdot.opendata.arcgis.com/search?q=crashes</a>  | downloaded  |
| Employment (LEHD)                       | <a href="https://lehd.ces.census.gov/data/">https://lehd.ces.census.gov/data/</a>  |   |
| Transit Routes                          | DOT  | Downloaded  |
| Parks and Recreation                    |  |   |

# Data Exploration



- Able to create/ transform new data to new geographies
- Scale matters – working to determine whether different scales needed between urban and rural contexts
- Working through process to identify model layers and additive layers
- Will have a draft for March 1st



# Implementation Measures

- Minor changes from November – no substantive change
- Clarified applicability of all measures to actions identified in Statutes as needing to be consistent
- Increase threshold for those activities from \$200,000 to \$1,000,000 to focus review on fewer projects with potentially greater impact

| Implementation Measures  | Stewardship of Resources | Thriving Economy | Healthy People and Places | Housing for Current and Future Residents | Connected and Inclusive Communities |
|--|--------------------------|------------------|---------------------------|--|-------------------------------------|
| Increase and diversify CT's housing supply to include rental and ownership, affordable and market-rate, small and family-sized units in a variety of medium- and high-density development types appropriate to the neighborhood context through new construction, rehabilitation of existing units and adaptive reuse of existing buildings. |                          | X                | X                         | X  |                                     |
| Reduce the number of low- and moderate-income households that are cost-burdened by housing, transportation, and energy costs.  |                          |                  | X                         | X  |                                     |
| Promote universal design as a component of new construction or substantial renovation projects.  |                          |                  | X                         |  |                                     |
| Maximize use of existing public sewer, water, and transportation infrastructure.   | X                        |                  |                           |  | X                                   |
| Promote infill, redevelopment and revitalization of neighborhoods that have suffered from prolonged disinvestment.   |                          | X                | X                         | X  |                                     |
| Preserve historically, culturally, and architecturally significant sites, structures, landscapes, buildings, and objects.  |                          | X                | X                         |  |                                     |
| Avoid developing prime farmland soils, wetlands, habitat areas, and core forest.   | X                        |                  |                           |  |                                     |
| Avoid new development activities in areas prone to flooding and inundation from sea-level rise or storms.  | X                        | X                | X                         |  |                                     |
| Incorporate low-impact development techniques, energy efficiency and resilience, and climate resilience technologies and techniques in development projects.   | X                        |                  | X                         |  |                                     |
| Encourage development project design to consider the applicability of future technologies such as smart city technologies, autonomous vehicles, 5G service, new energy systems, etc.   | X                        | X                |                           |  |                                     |

# Proposed Plan Implementation

---

- Amend CGS 16a-31 increase from \$200,00 to \$1,000,000 the value of agency actions affecting property that need to be consistent with the C&D Plan and require that agencies document and transmit to OPM their determination of consistency with the Plan's implementation measures, in a manner to be developed
- Establish an ad hoc C&D Plan Advisory Committee of state agency staff to:
  - Review and evaluate opportunities for interagency efforts and integration of resources
  - Consult with OPM on the development of Plan consistency reporting documentation
  - Regularly update the Ongoing Initiatives and Resources Appendix A
  - Provide a forum for developing approaches to balance conflicting conservation and development priorities
- Regular engagement with Continuing Committee during implementation – suggest annual meeting



# Second Draft

January 2024 draft of the 2025-2030 State C&D Plan



## Website

<https://storymaps.arcgis.com/collections/7ce949e7bdd341c689f2cee82d34f3f8>

# Next Steps

**Jan - Feb**



Consider Continuing Committee feedback, develop mapping, and revise draft

**Mar**



Publish draft for public comment by March 1st

**Spring**



Coordinate with COGs to solicit feedback from around the state

**Summer**



Make further revisions in consultation with state agencies

**Fall**



Review draft with Continuing Committee and prepare final recommended draft by Dec. 1, 2024

**2025  
Session**



Hearing and adoption